



V3.0 RELEASE NOTES

Hilti ON!Track

Release date: June 23, 2018

1	Release Highlights	2
2	New Features	3
2.1	From Location and Quantity in Confirm Delivery	3
2.2	Confirm Transfer List Deletion on Mobile	4
2.3	Request a Repair for a Hilti Tool	6
3	Enhancements/Improvements	6
3.1	Assets/Consumables/Commodities ID Management Change	6
3.2	Alerts Improvements	11
3.3	Default Units translated	11
3.4	Product Description page changed to Product Info	12

1 Release Highlights

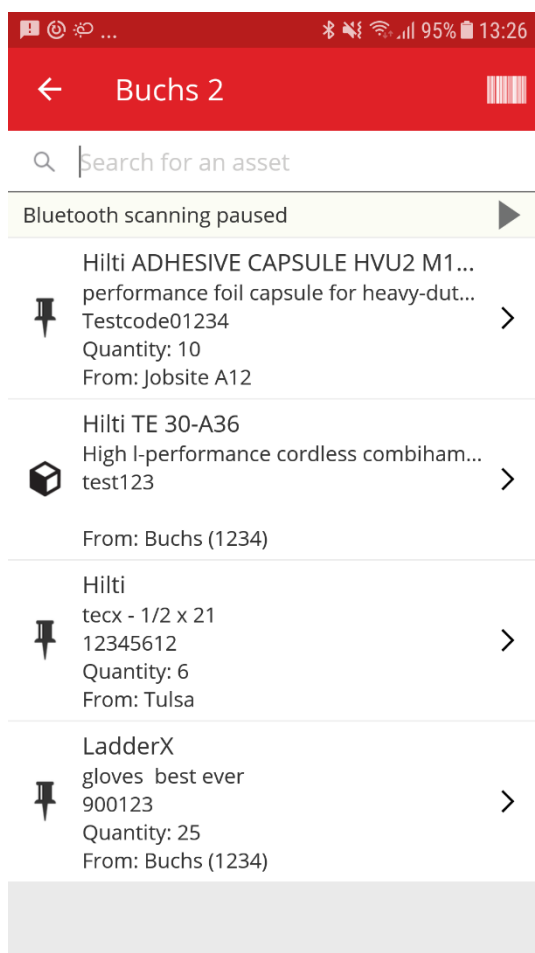
Disclaimer: After the new version, has been released, all the ON!Track users should log out first and log in back to ON!Track both on the mobile and the web application to be sure the new version of ON!Track will work as it's intended.

The V3.0 release focused on bug fixing and stability issues mainly, while additionally delivering some minor new features such as: improved Category and ID management for Assets/Consumables/Commodities, requesting a tool repair from ON!Track in countries where available and highlighting quantity and from location for Consumables/Commodities when transferring them and Confirm Delivery is enabled. Finally, one new language (Greek). The rest of this document will provide a more in-depth overview of what is included within the V3.0 software release.

2 New Features

2.1 From Location and Quantity in Confirm Delivery

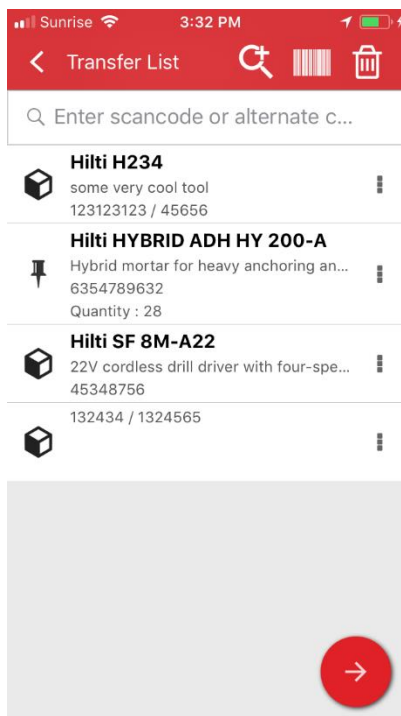
To improve transparency and for better usability from now on whenever a Consumable or a Commodity is included in a transfer while “Confirm Delivery” is enabled, the amount and the from location of the Consumable or Commodity which were transferred will be prompted and shown for better transparency of the transaction which needs to be confirmed.



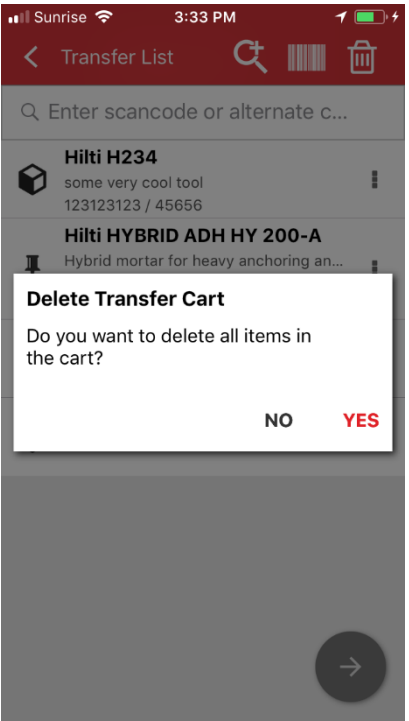
2.2 Confirm Transfer List Deletion on Mobile

From now on, whenever a transfer list is populated on Mobile with items to transfer from one location to another tapping on the “trash bin icon” will prompt a “Delete Transfer Cart” popup message to avoid mistakes. Even after tapping yes on the “Delete Transfer Cart” popup window an undo option will be available via a toast message in the bottom of the ON!Track application.

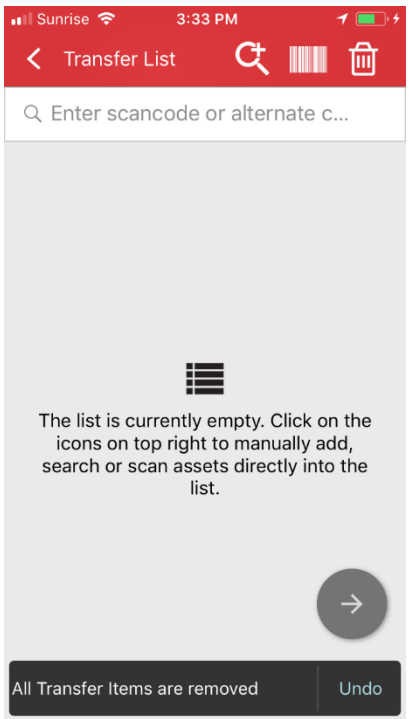
Transfer Cart list:



Delete Transfer Cart:



Undo after tapping Yes:



2.3 Request a Repair for a Hilti Tool

From now on for Hilti tools and Hilti fleet customers in GPDH2 countries it is now possible to request a repair for a Hilti tool straight from ON!Track itself. As of now the functionality is only enabled one by one, a service request cannot be ordered for multiple tools at a time, just one by one. To do so, simply select the tool in the web application which requires a service and click on the „request service” icon (a wrench logo) then the user will be re-directed to the local country specific Hilti Online webpage where he or she can log in with his or her Hilti Online username and password and proceed with the tool repair request. However if the user is already logged in to Hilti Online (in a separate tab for example), the repair request button will redirect straight to the repair request page on Hilti Online.

The screenshot shows the Hilti ON!Track web application interface. The top navigation bar includes the Hilti logo and the text 'Hilti ON!Track'. Below this, a secondary navigation bar contains icons for Dashboard, Locations (322), Assets, Employees, Templates, Reports, and Charges. The 'Assets' tab is currently selected. On the left sidebar, there is a search bar 'Search a location' and a list of locations including A (LOEXT12), AWH (12345), Dubai Port Jobsite, EMPLOYEES, Jaipur Airport authori, jb mum, JB01 (JB01ID), JB1001, ne2, new1, NewLocation, and NewLocation2. The main content area displays a table of assets with columns: Serial No., Scan Code, Friendly Name, Monthly Fleet Rate, and Responsible Employee. A red box highlights the 'Request' button (wrench icon) in the top toolbar of the assets table. The table shows 239 out of 240 assets.

Serial No.	Scan Code	Friendly Name	Monthly Fleet Rate	Responsible Employee
	0000000001			Confirm D
06MarchBranch0123...	06MarchBranch012345672001			roopam oberoi
	10000			roopam oberoi
	1000111			roopam oberoi
SN-Rented100057	12Feb201802			roopam oberoi
	12newasset1224			EMPAS LOC
	13123131231314			Akshat Bhendarkar
	131313sdfdsfdfsdf			roopam oberoi
SAP9089886684004	13Jan201801			Akshat Bhendarkar
SN-IndicatorTestPric...	13Jan201802			Akshat Bhendarkar
SN-IndicatorTestPric...	13Jan201804			Akshat Bhendarkar
SN-IndicatorTestPric...	13Jan201805			Akshat Bhendarkar
SN-Loaned100002008	13Jan201806			Akshat Bhendarkar

3 Enhancements/Improvements

3.1 Assets/Consumables/Commodities ID Management Change

For better ease of use and clarity the Assets/Consumables/Commodities ID management have been changed. Thus, the former Asset Details view have been changed to Category & IDs.

3.1.1 Web Changes

Old Web View:

Edit asset

Asset Details | Managed As | Certificates | Services

Asset Details

Category: Asset

Scan Code: Enter Scan Code

Alternate Code: 300008354

Scan code or alternate code is mandatory.

Serial Number: Search Serial Number

Template Name: TE 6-A 02-Hilti

Manufacturer: Hilti

We strongly advise you to enter the to...

Model: TE 6-A 02

Description: Cordless rotary hammer

Asset Status: Operational

Friendly Name: Enter Friendly Name

Ownership and Storage Details

Default Location:

Current Location:

Owner:

Save and Exit **Save and Next**

New Web View:

Edit asset

Asset Details | Managed As | Certificates | Services

Category & IDs

Category: Asset

Scan Code Type: Barcode

Scan Code: 45348756

Alternate Code: Enter Alternate Code

Serial Number: 123456789

Scan code or alternate code is mandatory.

We strongly advise you to enter the to...

Details

Template Name: SF 8M-A22-Hilti

Manufacturer: Hilti

Model: SF 8M-A22

Description: 22V cordless drill driver with four-speed

Asset Status: Operational

Friendly Name: Cordless1 metal

Ownership and Storage Details

Save and Exit **Save and Next**

As you can see from above the asset details fields have been re-arranged to give a better and easier overview about an Asset's/Consumable's/Commodity's attributes.

Category & IDs section includes:

- Category
- Scan Code Type
(This is a new field by default the type is always 'Barcode' for Consumables and Commodities, for Asset the type options 'Barcode' and 'Hilti Smart Tag' are available in countries where the AI T380 Hilti Smart Tags are already being sold.)
- Scan Code
- Alternate Code
- Serial Number

Details section include for Assets:

- Template Name
- Manufacturer
- Model
- Description
- Asset Status
- Friendly Name

For Commodities:

- Manufacturer
- Model
- Description
- Quantity
- Friendly Name

For Consumables:

- Manufacturer
- Model
- Description
- Unit
- Friendly Name

The screenshot displays the Hilti ON!Track web interface. On the left, a table lists assets with columns for Scan Code, Alternate Code, Manufacturer, and Model. The second row is highlighted, showing a Hilti SF 8M-A22 drill. On the right, a modal window titled '22V Cordless Drill Driver With Four-Speed Gearing...' is open, showing the 'Details' tab. This tab includes an image of the drill and a list of asset details. The 'Scan Code Type' field is highlighted with a red box, showing 'Barcode'.

Scan Code	Alternate Code	Manufacturer	Model
154255		Hilti	SF 14-A
45348756		Hilti	SF 8M-A22

Asset Details	
Friendly Name	: Cordless1 metal
Responsible Employee	: Szilard Szoezs
Current Location	: Buchs (1234)
Current Location State	: Active
Status	: Operational
State	: In Warehouse
Asset Group	: Cordless
Scan Code	: 45348756
Scan Code Type	: Barcode
Serial Number	: 123456789
Asset Category	: Asset
Description	: 22V cordless drill driver with fo...
Model	: SF 8M-A22

The Scan Code Type will be always visible on the Asset Side Panel as well.

3.1.2 Mobile Changes

On the mobile application when adding a new Asset, the Add Hilti Item option is hidden from now on for SAP ByDesign countries. When adding an Asset, the barcode scanner usage is mandatory from now whenever the “Scan Code field” wishes to be populated. The “Alternate Code field” still could be edited manually. The Asset Details/Commodity Details screens have been adjusted to reflect the changes on the Web also.

Mobile Old View:

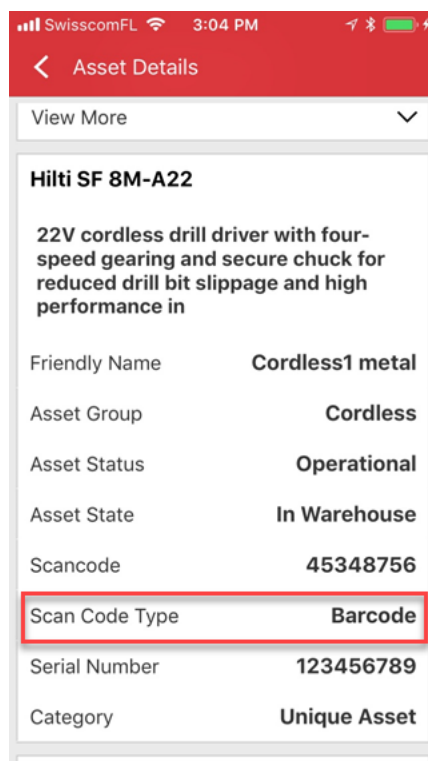
The Mobile Old View interface consists of four sequential screens:

- Add Asset:** Features an "Asset Identification" section with input fields for "Scan Code" (placeholder: "Scan or enter scancode ID"), "Alternate Code" (placeholder: "Scan or enter alternative ID"), and "Serial Number" (placeholder: "Scan or enter serial number"). A numeric keypad is visible at the bottom.
- Add asset details:** Features an "Images" section with a "+" icon and "No images uploaded" text. Below is the "Hilti TE 7-C" section with a "Friendly Name" field (placeholder: "Enter Friendly Name"), an "Asset Group" dropdown (selected: "Rotary hammers"), a "Notes" field (placeholder: "Enter Notes"), and a "Storage" section with a "Default Location" dropdown (selected: "Warehouse Boston (BOS)").
- Add Commodity:** Similar to "Add Asset" but with a different header and a numeric keypad at the bottom.
- Add commodity details:** Features an "Images" section with a "+" icon and "No images uploaded" text. Below is the "Commodity Details" section with a "Manufacturer" dropdown (placeholder: "Select manufacturer"), a "Model" field (placeholder: "Enter model"), a "Description" field (placeholder: "Enter description"), an "Asset Group" dropdown (placeholder: "Select an asset group"), and a "Notes" field.

Mobile New View:

The Mobile New View interface consists of three sequential screens:

- Add Asset:** Features an "Asset Identification" section with input fields for "Scan Code" (placeholder: "Add Scan Code"), "Alternate Code" (placeholder: "Enter Alternate Code"), and "Serial Number" (placeholder: "Enter Serial Number"). A red box highlights a barcode icon next to the "Scan Code" field. A large right arrow is at the bottom.
- Select Scan Code Type:** Features a "Hilti Smart Tag" section with a Bluetooth icon and a "Barcode" section with a barcode icon.
- Add asset details:** Features an "Images" section with a "+" icon and "No images uploaded" text. Below is the "Details" section with a "Manufacturer" dropdown (placeholder: "Select manufacturer"), a "Model" field (placeholder: "Enter model"), a "Description" field (placeholder: "Enter description"), a "Friendly Name" field (placeholder: "Enter Friendly Name"), and an "Asset Group" dropdown.



The Scan Code Type will be always visible in the Asset Details menu section.

3.2 Alerts Improvements

The Alerts module have been re-worked to eliminate various alert scheduling issues which were recurring previously.

3.3 Default Units translated

The Introduced default units with the V2.9 release have been translated to supported languages, such as:

- EACH
- BOX
- CANS
- LBS
- TONS
- SHEETS
- FEET
- YDS
- METERS

3.4 Product Description page changed to Product Info

The Product Description page's contents have been updated.