

# Hilti HTB Hollow Wall Metal

## Anchor Submission Folder

Product Information	2
Technical Data	3-4
Phase-in Phase-out	5
Country of Origin	6
Project Reference	8



Recycling one ton of paper saves 17 trees and 7000 gallons of water.  
Please consider your environmental responsibility before using the hard copy version!

# Hollow wall metal anchor with screw HTB-2/HTB-2-S



## BASE MATERIALS

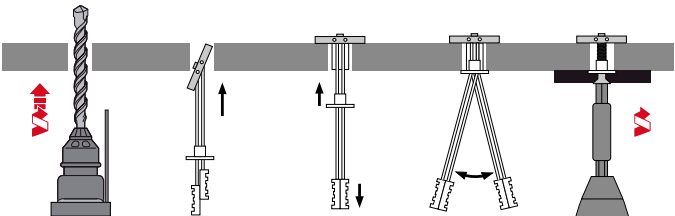
- Concrete (hollow deck)
- Drywall

## APPLICATIONS

- For a variety of light-duty anchoring applications in drywall and heavier-duty applications in concrete block

## ADVANTAGES

- Highest performance in gypsum board
- No setting tool needed
- Unique installation “legs” and locking cap facilitate fastenings in wide range of drywall and hollow wall materials up to 92 mm thick



These are abbreviated instructions which may vary according to the application.

Technical data	
Environmental conditions	Indoor, dry conditions
Head configuration	Round head, Inner thread
Material composition	Polypropylene
Type of fastening	Pre-fastening
Approvals / test reports	N/A
Installation direction	All

Recommended load (kN), safety factor(γ)=3

Size	Base materials	Nrec	Vrec
M5/M6	Gypsum board 12.5mm	0.2	0.3
M5/M6	Gypsum board 2 x 12.5mm	0.5	0.3
M5**	Hollow block	0.7	1.0
M6**	Hollow block	0.9	1.3

Remarks:

- 1) All the data applies to no edge distance, spacing and other influences
- 2) Holes must be produced by rotary drilling only

Ordering designation	Anchor Size	Drill bit diameter	Required Tightening Torque	Sales pack quantity	Item number
HTB-2 M5	5 mm	13 mm	3 Nm	100 pc	2158762 <sup>1)</sup>
HTB-2 M6	6 mm	14 mm	5 Nm	100 pc	2158764 <sup>1)</sup>
HTB-2-S M5X60	5 mm	13 mm	3 Nm	100 pc	2158763 <sup>1)</sup>
HTB-2-S M6X60	6 mm	14 mm	5 Nm	100 pc	2158765

<sup>1)</sup> This is a non-stock item. For detailed lead time information please contact your Hilti representative.

Please visit Hilti website for the latest item numbers and related products

# TECHNICAL DATA

## Base material



Drywall

## Basic loading data

All data in this section applies to:

- Correct setting (See setting instruction)
- No edge distance and spacing influence
- Base material as specified in the table
- Minimum base material thickness

### Recommended loads<sup>a)</sup>

Anchor size			M5	M6
Gypsum board	N <sub>Rec</sub>	[kN]	0,25	
Thickness 10 mm	V <sub>Rec</sub>	[kN]	0,15	
Gypsum board	N <sub>Rec</sub>	[kN]	0,20	
Thickness 12,5 mm	V <sub>Rec</sub>	[kN]	0,30	
Gypsum board	N <sub>Rec</sub>	[kN]	0,50	
Thickness 2x12,5 mm	V <sub>Rec</sub>	[kN]	0,30	
Fibre reinforced gypsum board	N <sub>Rec</sub>	[kN]	0,40	
Thickness 10 mm	V <sub>Rec</sub>	[kN]	0,60	
Fibre reinforced gypsum board	N <sub>Rec</sub>	[kN]	0,60	
Thickness 12,5 mm	V <sub>Rec</sub>	[kN]	1,00	
Hollow decks	N <sub>Rec</sub>	[kN]	0,50	
Cavity to surface thickness ≥ 30,0 mm	V <sub>Rec</sub>	[kN]	-	
Hollow brick "Parpaing Creux B40"	N <sub>Rec</sub>	[kN]	0,45	
	V <sub>Rec</sub>	[kN]	0,90	

a) With overall global safety factor  $\gamma = 3$  to the characteristic loads and a partial safety factor of  $\gamma = 1,4$ , to the design values.

## Materials

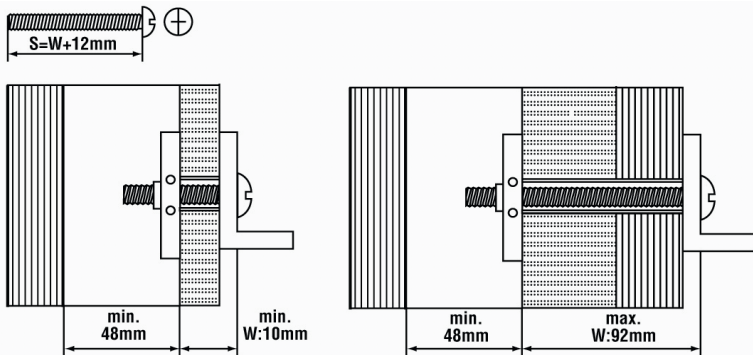
### Material quality

Part	Material
Metal channel	Carbon steel galvanized to 5 microns
Cap washer	Polypropylene copolymer
Legs	High impact polystyrene
Screw	Carbon steel galvanized to 3 microns

## Setting information

### Setting details

Anchor size			M5	M6
Nominal diameter of drill bit	$d_0$	[mm]	13 - 14	
Thickness of wall and fixture	min	$h + t_{fix}$	10	
	max	$h + t_{fix}$	92	
Minimum space of cavity	$l$	[mm]	48	
Screw length	$l$		$12 + h + t_{fix}$	
Screw size	$d$	[Nm]	M5	M6
Torque moment	$T_{inst}$	[mm]	3	5



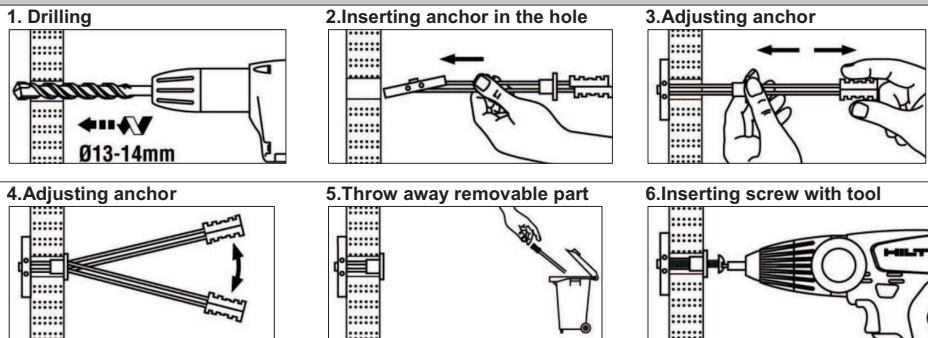
### Installation equipment

Anchor size	M5	M6
Rotary hammer	TE 6A, TE 6C, TE 6S, TE 15, TE 15-C, TE 18-M	
Setting tools	Torque wrench	
Machine setting tool	available	

### Setting instruction

\*For detailed information on installation see instruction for use given with the package of the product.

#### Setting instruction

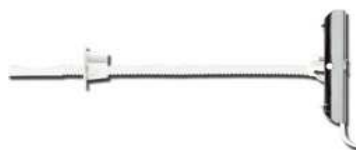


21<sup>st</sup> February 2019  
REF: 012/AM/YW/19

To whom it may concern,

**RE: New version of HTB anchor**

With reference to above, we would like to announce that a new version of the HTB anchor is available. Please refer below for updated product outlook, description and item number.



Phased-out version		Phased-in version	
Item number	Product description	Item number	Product description
236693	HTB M5	2158762	HTB-2 M5
236694	HTB M6	2158763	HTB-2 M6
236695	HTB-S M5x60	2158764	HTB-2-S M5x60
236696	HTB-S M6x60	2158765	HTB-2-S M6x60

Should you have further question, please do not hesitate to contact our Technical Representatives or Customer Service Hotline at 8228-8118.

Yours sincerely,



Yahamali Wijesinghe  
Product Manager

Attn. : To whom it may concern

Date : 1 April 2025  
Ref. : 077/AM/SC/25

Subject : Country of Origin- Hilti HTB-2 Hollow Wall Metal Anchor

Dear Sir / Madam,

Enclosed please find the information of Hilti HTB-2 Hollow Wall Metal Anchor

Brand Name : Hilti

Model Name : Hilti HTB-2 Hollow Wall Metal Anchor

Manufacturer : Hilti Corporation

Address of Manufacturer : FL-9494, Principality of Liechtenstein.

Manufacturer Contact Person : Spencer Cheung

Supplier : Hilti (Hong Kong) Ltd

Address of Supplier : 701-704, 7/F, Tower A, Manulife Financial Centre,  
223 Wai Yip Street, Kwun Tong, Kowloon, Hong Kong

Supplier Contact Person : Spencer Cheung (+852 9732 1231)

Country of Origin : *(Attached)*

Should you have further questions, please do not hesitate to contact our Technical Representatives, Customer Service Hotline at 8228-8118, or email us at [hksales@hilti.com](mailto:hksales@hilti.com).

Yours faithfully,



Spencer Cheung  
Head of Product Leadership Strategy

**Hilti (Hong Kong) Ltd.**  
701-704 | Tower A | Manulife Financial Centre  
223 Wai Yip Street | Kwun Tong  
Kowloon | Hong Kong  
P +852-8228 8118 | F +852-2954 1751  
[www.hilti.com.hk](http://www.hilti.com.hk)



Item number	Model name	Country of Origin
2158762	Hollow wall met. anchor HTB-2 M5	USA
2158763	Hollow wall met. anchor HTB-2-S M5x60	USA
2158764	Hollow wall met. anchor HTB-2 M6	Canada
2158765	Hollow wall met. anchor HTB-2-S M6x60	USA



## Hilti HTB Hollow Wall Metal Anchor Job Reference

[illegible]