

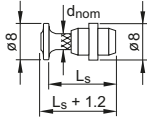
**Nail for fastening drywall track  
to steel**

# X-S Nail for fastening drywall track to steel

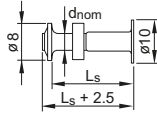
## Product data

### Dimensions

X-S13 THP



X-S16 P8TH



### Material specifications

Carbon steel shank:

X-S 16 P8 TH HRC 55.5

X-S13 THP/MX HRC 52.5

Zinc coating: 5–13  $\mu\text{m}$

### Recommended fastening tools

DX 6 MX, DX 460 MX, DX 5 MX, DX 36,

DX 2, DX 351 MX, DX-E 72

DX 6 F8, DX 460 F8, DX 5 F8, DX 351 F8,



- See fastener program in the next pages.

## Approvals

ICC (USA):

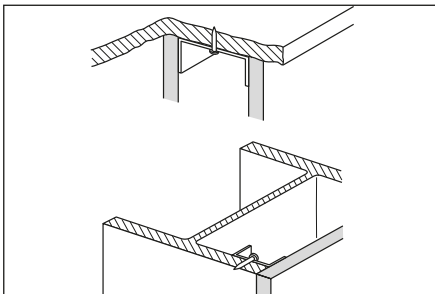
X-S (ESR-1752)



Not all information presented in this product data sheet might be subject to approval / certificate content. Please refer to approval/certificate for further information.

## Applications

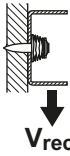
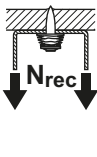
### Examples



Drywall tracks to steel

### Performance data

Recommended resistance under tension and shear load



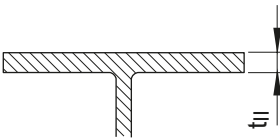
Steel 0.4 kN

Conditions:

- Redundancy (multiple fastening) must be provided
- All visible failures must be replaced

### Application recommendation

Thickness of base material



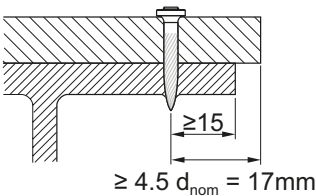
Steel:  $t_{II} \geq 4 \text{ mm}$

Thickness of fastened material

Wooden track:  $t_I \leq 24 \text{ mm}$

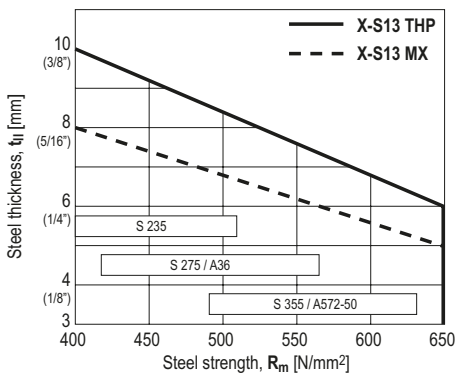
Metal track:  $t_I \leq 2 \text{ mm}$

Fastener positioning



Edge distance:  $c \geq 15 \text{ mm}$

Application limits



### Corrosion information

- The intended use only comprises fastenings which are not directly exposed to external weather conditions or moist atmospheres.
- For more details, please refer to following technical document: Hilti Corrosion Handbook.

### System recommendation

- For more details, please refer to the chapter **Accessories and consumables compatibility** in the Direct Fastening Technology Manual (DFTM).

#### Fastener selection

	Application	Base material
X-S 16	Metal track	Steel
X-S 13	Metal track	Steel

increasing strength

#### Cartridge recommendation

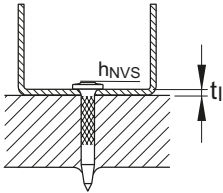
Base material		Cartridge color (tool power level)	
		Tool type: DX 6 MX  DX 6 F8	Tool type: DX 5 MX, DX 460 MX, DX 351 MX DX 5 F8, DX 460 F8, DX 351 F8, DX 2
		Cartridge type: 6.8/11 M	Cartridge type: 6.8/11 M
S235 to	$3 \leq t_{II} < 6 \text{ mm}$	titanium ■ (1-4)	green ■, yellow ■
S355	$6 \leq t_{II} \leq 10 \text{ mm}$	titanium ■ (3-6)	yellow ■, red ■

- Tool power level adjustment by setting tests on site.
- Start tool energy selection with lowest recommended tool power level.
- Correct according requirement from chapter quality assurance.

## Quality assurance

### Setting depth control

#### Fastening to steel



X-S:  $h_{NVS} = 2-4 \text{ mm}$

## Fastener program

Fastener	Item no. Packs of 1000 nails	Item no. Packs of 100 nails	$L_s$	$d_{nom}$	Standard tools							
					DX 6 MX, DX 5 MX, DX 460 MX	DX 6 F8, DX 5 F8, DX 460 F8	DX 2, DX 36	DX E72	DX 35T MX	DX 35T F8	DX 35	
X-S 13 THP	274061	274059	13 mm	3.7 mm		■	■	■		■	■	
X-S 16 P8 TH	388842		16 mm	3.7 mm		■	■	■		■	■	
X-S 13 MX	274062	274060	13 mm	3.7 mm	■				■			